



**PEREGO**  
TESSITURA ITALIANA DAL 1929

---

**LE FIANDRE**  
STOCK SERVICE

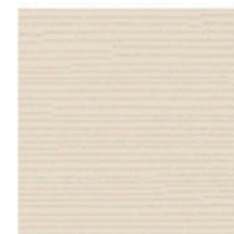


# DIAMANTE

FIAMMATO



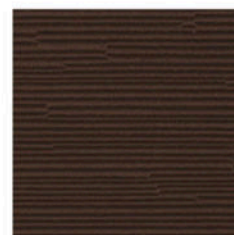
001 BIANCO TP



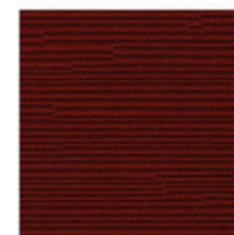
160 CH AVORIO TP



172 CH TORTORA TP



191 SC TESTA DI MORO TP



488 SC SIENA TP



785 CS NERO TP



704 CH PERLA TP

**DIMENSIONI**

H. 340

230 gr/m<sup>2</sup>

51% COTONE - 49% POLIESTERE

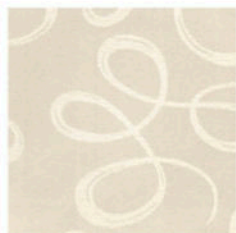
**DIAMANTE**  
FIAMMATO

# DIAMANTE

NASTRO



001 BIANCO TP



160 CH AVORIO TP



172 CH TORTORA TP



704 CH PERLA TP

## DIMENSIONI

H. 340  
230 gr/m<sup>2</sup>

51% COTONE - 49% POLIESTERE



# DIAMANTE

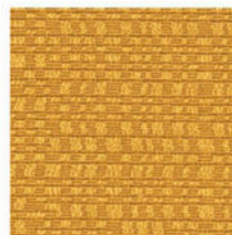
NASTRO





# DIAMANTE

OPUS



372 CH SENAPE TP



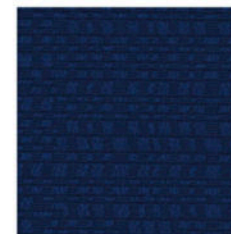
426 SC ROSSO TP



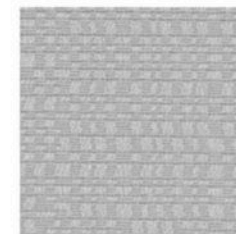
488 SC SIENA TP



230 SC AVID TP



288 SC TITANIC TP



704 CH PERLA TP



744 SC GRIGIO SCURO TP



785 SC NERO TP

## DIMENSIONI

H. 340

230 gr/m<sup>2</sup>

51% COTONE - 49% POLIESTERE

# DIAMANTE

OPUS



001 BIANCO TP



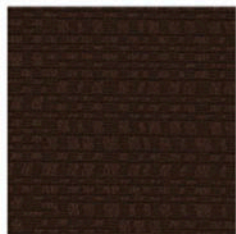
160 CH AVORIO TP



172 CH TORTORA TP



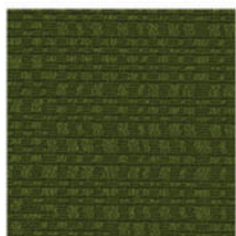
180 SC CAPPUCCINO TP



191 SC TESTA DI MORO TP



193 SC FONDENTE TP



680 SC VERDE MUSCHIO TP

## DIMENSIONI

H. 340  
230 gr/m<sup>2</sup>

51% COTONE - 49% POLIESTERE



# DIAMANTE

OPUS





# DIAMANTE

RASATO



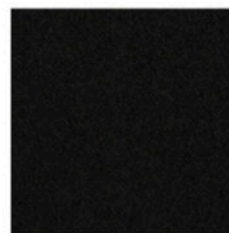
230 SC AVIO TP



372 CH SENAPE TP



680 SC VERDE MUSCHIO TP



785 SC NERO TP



744 SC GRIGIO SCURO TP



704 CH PERLA TP

## DIMENSIONI

H. 340

230 gr/m<sup>2</sup>

51% COTONE - 49% POLIESTERE

# DIAMANTE

RASATO



001 BIANCO TP



160 CH AVORIO TP



172 CH TORTORA TP



180 SC CAPPUCCINO TP



191 SC TESTA DI MORO TP

## DIMENSIONI

H. 340  
230 gr/m<sup>2</sup>

51% COTONE - 49% POLIESTERE



# DIAMANTE

RASATO



# DIAMANTE

RUSTICATO



001 BIANCO TP



160 CH AVORIO TP



172 CH TORTORA TP



180 SC CAPPUCCINO TP



191 SC TESTA DI MORO TP



193 SC FONDENTE TP



680 SC VERDE MUSCHIO TP



372 CH SENAPE TP



426 SC ROSSO TP

## DIMENSIONI

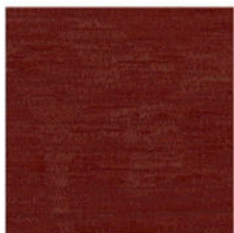
H. 340

230 gr/m<sup>2</sup>

51% COTONE - 49% POLIESTERE

# DIAMANTE

RUSTICATO



488 SC SIENA TP



230 SC AVIO TP



288 SC TITANIC TP



704 CH PERLA TP



744 SC GRIGIO SCURO TP



785 SC NERO TP

## DIMENSIONI

H. 340  
230 gr/m<sup>2</sup>

51% COTONE - 49% POLIESTERE

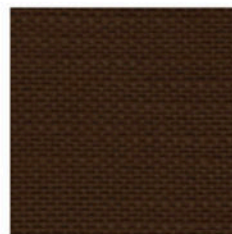


**DIAMANTE**  
RUSTICATO

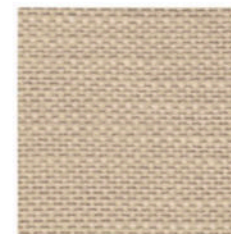


# FENICE

NATTA



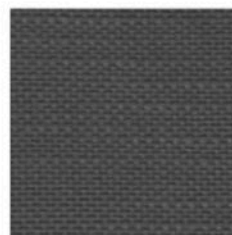
193 SC FONDATE TP



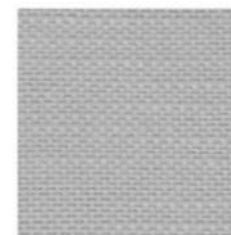
172 CH TORTORA TP



160 CH AVORIO TP



744 SC GRIGIO SCURO TP



704 CH PERLA TP



288 SC TITANIC TP

**DIMENSIONI**

H. 340

240 gr/m<sup>2</sup>

58% COTONE - 42% POLIESTERE

**FENICE**  
NATTA



# MIZAR

RICCARDO



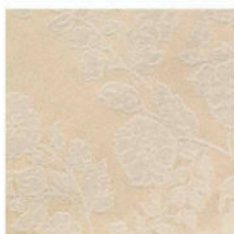
181 CH DESERTO TFOT



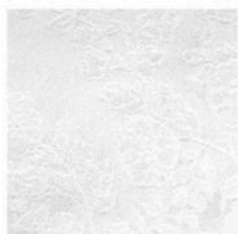
001 BIANCO

# MIZAR

RANUNCOLO



181 CH DESERTO TFOT



001 BIANCO

## DIMENSIONI

50X50 - 100X100 - 120X120 - 150X150 - 180X180

H. 320

210 gr/m<sup>2</sup>

100% COTONE





**MIZAR**  
RICCARDO

**MIZAR**  
RANUNCOLO

